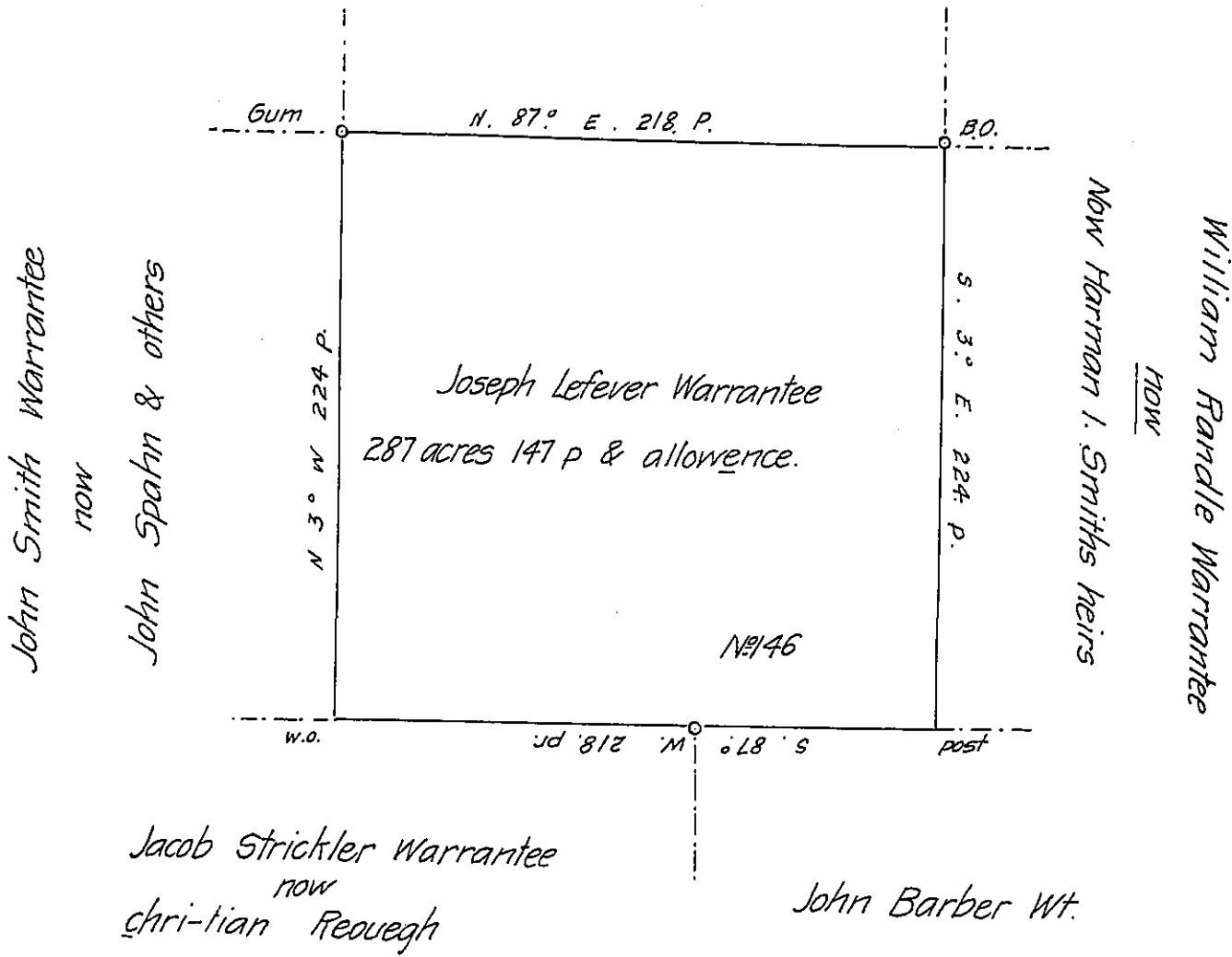


Joseph Kittle Mathias Knour  
now  
Amos Broomfield Wt.



Surveyed Oct. 8<sup>th</sup> 1794 - 287 acres 147 pr. & allowance on a warrant granted Joseph Lefever the 4<sup>th</sup> day of March 1793 on the waters of Conno-  
 quenessing. = I Nathan M. Slater County Surveyor in and for the County of Butler  
 do hereby Certify that the foregoing is a true Copy of a Survey Recorded in the  
 Entry book of Stephen Gappen remaining in my office & that I have examined  
 it and found it correct

In witness whereof I have hereunto set my hand this 11<sup>th</sup> day of  
 Feb AD 1874  
 N. M. Slater C. S.

IN TESTIMONY that the above is a copy of the original remaining on file in  
 the Department of Internal Affairs of Pennsylvania, made  
 conformably to an Act of Assembly approved the 16th day of  
 February, 1833, I have hereunto set my Hand and caused  
 the Seal of said Department to be affixed at Harrisburg,  
 this twelfth day of September 1905

*George R. ...*  
 Secretary of Internal Affairs.